

-----//-----
Name of Expert Advisor/Expert " ScoutFX Panel "©, related trademarks and logos are trademarks owned by Kalinka Capital OU (Estonia).

Attention! This program is protected by copyright law and international conventions. Illegal copying or distribution of this program, or any part of it, may result in severe administrative and criminal penalties and will be prosecuted to the fullest extent of the law.

Copyright © 2008-2023 Kalinka Capital OU All Rights Reserved.

Dear trader! You have become the proud owner of the ScoutFX utility Panel created by Kalinka Capital OU . All those who bought the previous versions, 1.0 - ..., 2.0 - ... receive the next version as an upgrade for free.



ScoutFX Panel Utility

- Current version: v .3.02
- Release date: 05/10/2023
- Meta trading terminal Trader 4 - [MetaQuotes Software Corp.](https://www.metaquotes.com/)
- **Purpose** : a signal system for making transactions in the trading terminal according to a given strategy algorithm and making a decision to open a transaction by a trader.
- **Quote type** : 4 (1.1234) or 5 (1.12345) digit quotes. Automatic detection.
- **Trading account types** : ECN , NDD , Pro , Standard , Cent ... all types of accounts supported by the Meta trading platform trader 4.
Currency pair : EURUSD,GBPUSD, USDJPY,GBPJPY,USDCAD,EURAUD, EURJPY,AUDCAD,AUDJPY,AUDUSD, CADJPY,EURCAD,EURGBP,GBPCHF, USDCHF,CHFJPY,AUDCHF,GBPCAD, NZDCAD,AUDNZD,XAUUSD

Instructions for use for Meta trader 4.

Specifications and minimum requirements.

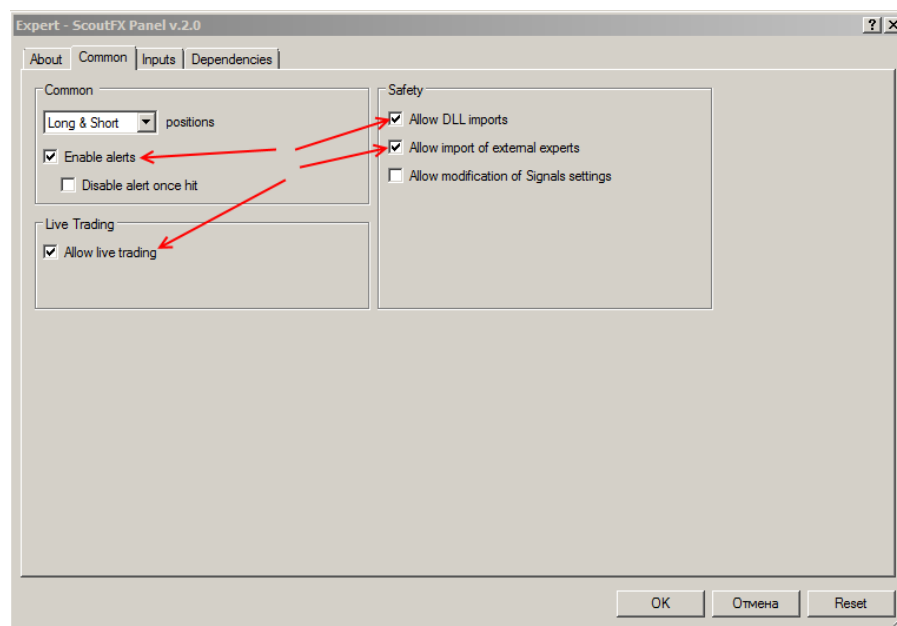
- **Leverage** : from 1:30. It is recommended to use for best results with minimal risks 1:100 - 1:200. To achieve maximum results, it is recommended to use 1:500 with a load on each position of no more than 0.5% of the deposit. At this parameter "Volume percent lot" = 0.5

ab Symbols List	EURUSD,GBPUSD,USDJPY,GBPJPY,USDCAD,EURAUD,...
1/2 Volume Fixed lot	0.1
1/2 Volume percent lot	0.5 ←

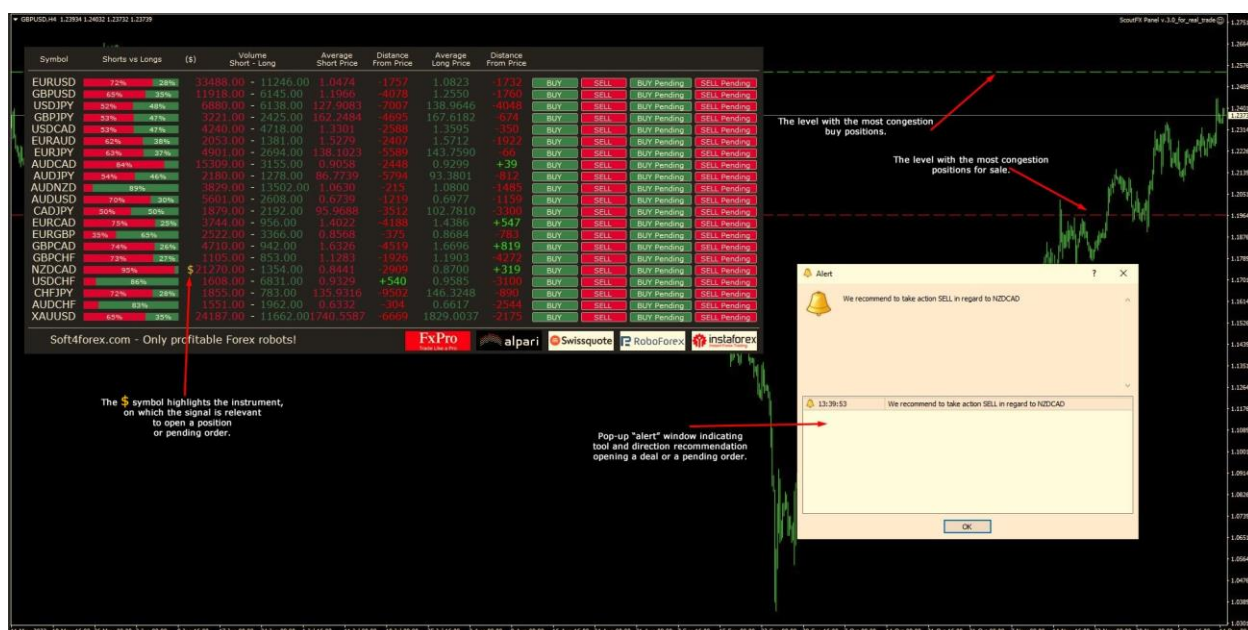
Attention! Using a leverage of 1:500 and above increases the load on the deposit and increases the risk of losing the deposit when using the withdrawal at no loss / averaging.

- **Money Management** : automatic control of the volume of a trading position for entering the market relative to the size of the trading account balance. It is possible to switch to a fixed volume.
- **Loss limit** : entry into the market with positions with StopLoss .
- **Profit fixation** : according to the take profit set by the utility.
- **Used time frame**: any. The selected time frame does not affect the results of received entry signals.
- **Recommended minimum deposit**: trade with StopLoss of at least \$100 per currency pair for 0.01 lot.
- **Installation**: file in . ex 5 is installed in the trading terminal folder \MQL4\Experts. forexrobot file . dll is installed to the \MQL4\Libraries folder. The folder is accessed through the navigation menu of the Meta trading terminal Trader 4. How to install the adviser in the trading terminal, read on our website in the " [FAQ](#) " section.

2



- **Trading settings**: supplied for the currency pairs indicated at the beginning of this manual and on the EA [description page](#) on our website.
- **Transaction types**: positions in the market SELL , BUY . Pending orders SellStop , SellLimit . The type of transaction is chosen by the trader when deciding to enter the market on the panel by pressing the corresponding button of the selected instrument.



Description of the trading strategy of the ScoutFX trading panel

Trading strategy: Entering the market based on the analysis of COT (Commitments of Traders) reports provided by the CFTC (US. Commodity Futures Trading Commission) - EURUSD, GBPUSD, USDJPY, GBPJPY, USDCAD, EURAUD, EURJPY, AUDCAD, AUDJPY, AUDUSD, CADJPY , EURCAD, EURCHF, EURGBP, GBPCAD, USDCHF, CHFJPY, AUDCHF, CADCHF. Entering the market 2-3 times a week for several pairs at once, for which we have the conditions for opening positions specified in the settings. The target profit for each instrument in the market is 0.3% intraday or the achievement of the set take profit for each instrument individually.

Detailed video with examples of trading with ScoutFX Panel - [YouTube](#) (subscribe to our channel not to miss new videos about our forex robots).

Parameters and trading settings

The utility uses **8(!)** parameters for adjusting trading settings. Next, we will talk about each setting with a detailed description of the results obtained.

The utility settings window can be opened in the Meta Trader 4 terminal in two ways.

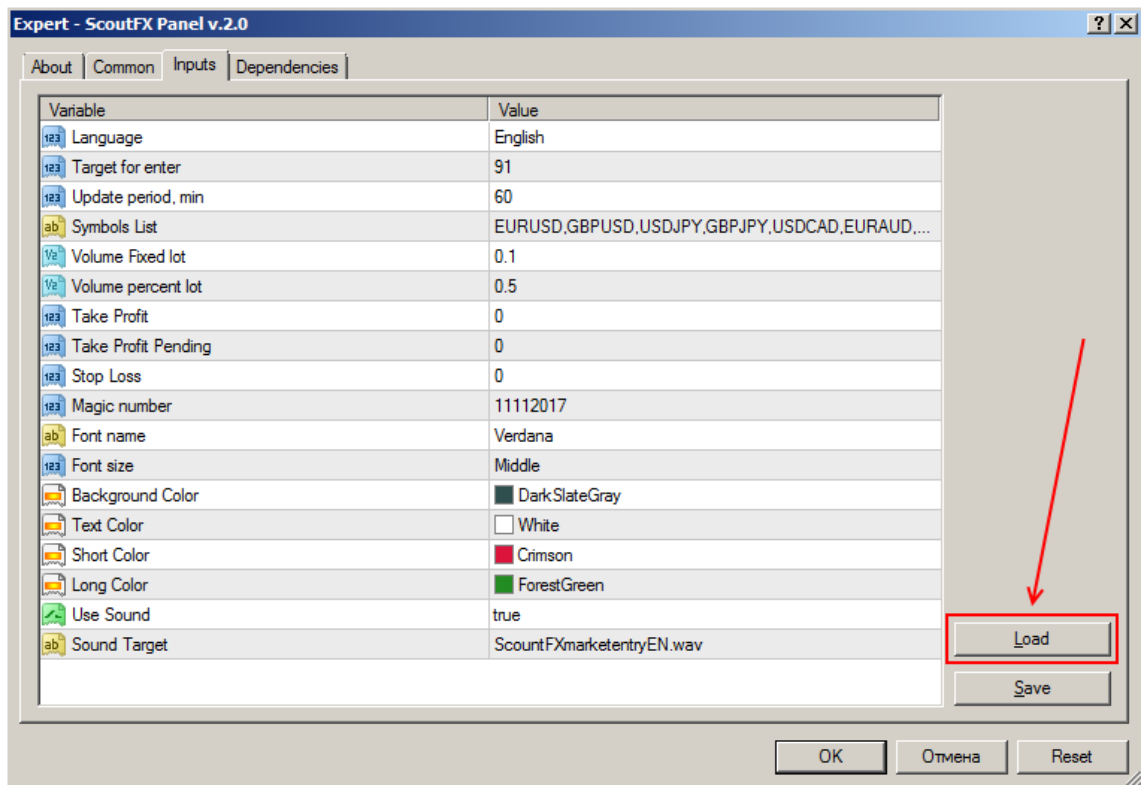
1. Double-click with the left mouse button on the utility symbol in the upper right corner of the chart where the utility is installed.



2. Calling the utility settings menu via the F7 key.

By opening the utility settings window, you can manually change any parameter available in the settings, or load ready-made trading settings supplied in the bundle you purchased via the "Load" button.

4



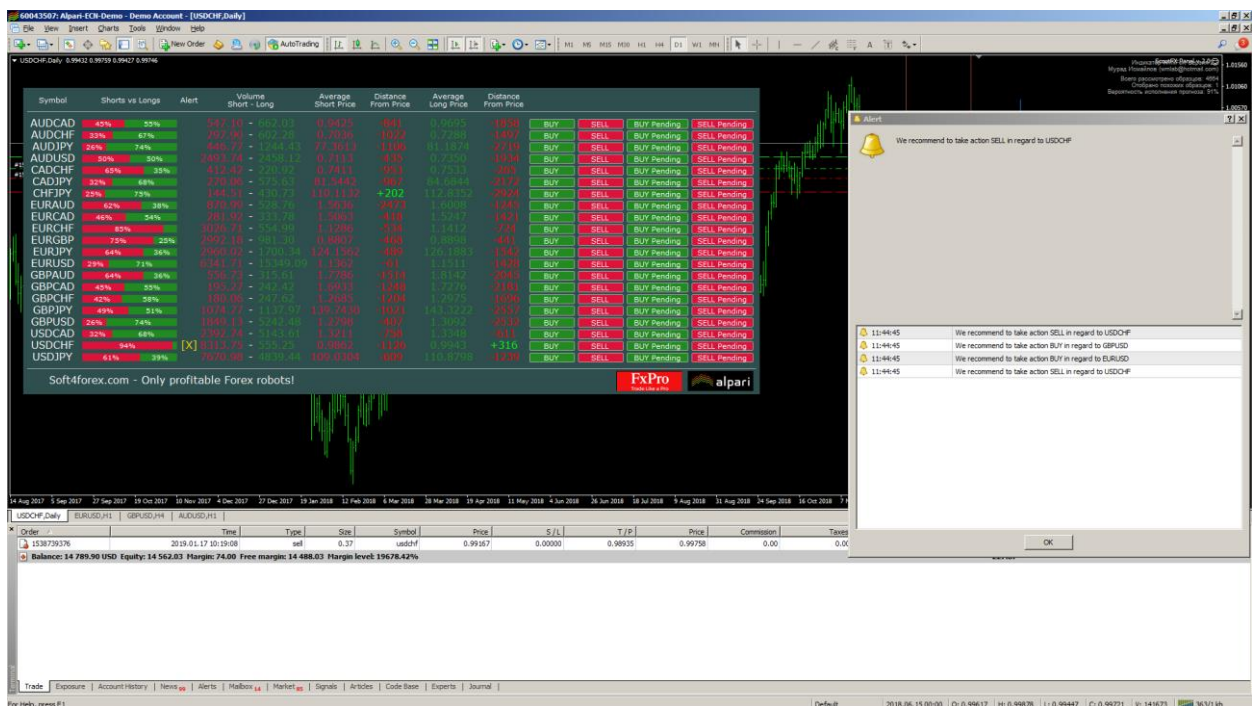
Given the flexibility of the trading settings of the utility, you can also change the trading settings yourself, creating your own individual trading algorithm.

1 Beginners are advised to work with the adviser for some time on a demo account.

Trading settings, detailed description.

language // selection of the trading panel interface language. There is a choice of English or Russian language.

Target for enter // percentage target. The % dominance of the choice of market participants is set. Example: parameter = 90. If for any of the instruments the volume of open positions is equal to or greater than 90%, the panel will inform you about this with a pop-up window with a recommendation to make a decision to make a deal, a voice message and a symbol [X] opposite the instrument for which the signal was generated .



update period , min // sets the period in minutes after which to repeat the request for CoT data .

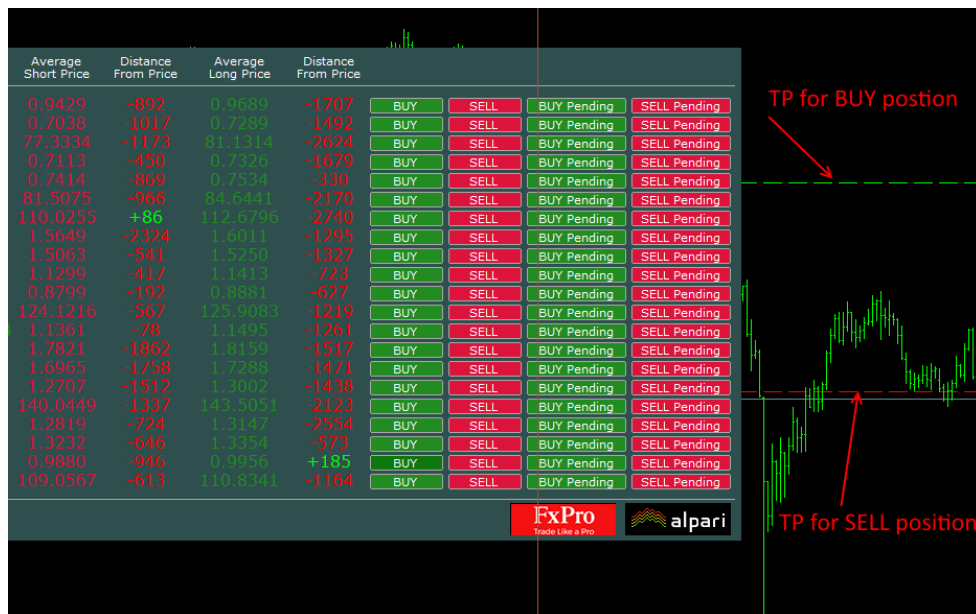
symbol List // list of instruments for which the request is being made. The name of the instruments in the settings must match the name/designation of the instruments in the terminal of your broker.

Volume Fixed lot // fixed position/order volume in lots.

Volume percent lot // automatic calculation of the volume of the opened position/order. The parameter is set as a percentage of the margin of the account balance. The value is specified in both integer and decimal values.

take profit // the size of the position's physical take profit in points. If value = 0 (zero), take profit will be set at the level of the largest accumulation of orders in the opposite direction.

5



Take Profit Pending // Size take profit in paragraphs for deferred SellStop and BuyStop orders. If value = 0 (zero), the order will be placed without take profit.

Stop Loss // Size of the loss limit in points. If value = 0 (zero), position/order will be opened without Stop level Loss .

Non-trading settings

Magic number // Identifier of orders opened by the trading panel. To customize orders opened by the ScoutFX trading panel Panel , the magic number must be unique from orders/deals opened by other advisors or manually by a trader.

Font name // The name of the font used in the ScoutFX dashboard panel . All fonts from the Windows platform are available.

Font size // The size of the font used in the info panel. Available in three sizes Small , Middle , Big .

background color // ScoutFX dashboard background color

Text color // Font color for tool and table headers.

short color // Color of the "sell" status of the bar, buttons for opening sell deals, values of sell volumes.

Long color // Color of the "buy" status of the bar, buttons for opening buy deals, values of buy volumes.

6

Symbol	Shorts vs Longs	Alert	Volume Short - Long	Average Short Price	Distance From Price	Average Long Price	Distance From Price	Text color
AUDCAD	48% 52%		579.30 - 627.38	0.9428	-878	0.9684	-1682	BUY SELL BUY Pending SELL Pending
AUDCHF	33% 67%		312.86 - 633.78	0.7038	-753	0.7278	-1646	BUY SELL BUY Pending SELL Pending
AUDJPY	77%		447.83 - 1478.73	77.2601	-763	80.7278	-2676	BUY SELL BUY Pending SELL Pending
AUDUSD	34% 66%		1747.62 - 3439.10	0.7104	-317	0.7285	-1492	BUY SELL BUY Pending SELL Pending
CADCHF	62% 38%		318.77 - 197.55	0.7410	-630	0.7534	-589	BUY SELL BUY Pending SELL Pending
CADJPY	76%		222.49 - 713.72	81.3436	-643	84.4134	-2426	BUY SELL BUY Pending SELL Pending
CHFJPY	82%		110.05 - 486.52	109.9848	+311	112.3531	-2780	BUY SELL BUY Pending SELL Pending
EURAUD	69% 31%		948.79 - 197.74	1.5671	-2576	1.6030	-1014	BUY SELL BUY Pending SELL Pending
EURCAD	54% 46%		358.73 - 111.05	1.5075	-836	1.5257	-983	BUY SELL BUY Pending SELL Pending
EURCHF	83%		3591.25 - 758.32	1.1294	-383	1.1396	-636	BUY SELL BUY Pending SELL Pending
EURGBP	76%		757.77 - 2381.22	0.8782	+126	0.8848	-787	BUY SELL BUY Pending SELL Pending
EURJPY	29% 71%		1603.66 - 3945.46	123.9137	-378	125.3025	-1010	BUY SELL BUY Pending SELL Pending
EURUSD	79%		4968.17 - 19231.57	1.1353	-144	1.1481	-1135	BUY SELL BUY Pending SELL Pending
GBPAUD	80%		930.58 - 231.79	1.7897	-2648	1.8146	+158	BUY SELL BUY Pending SELL Pending
GBPCAD	67% 33%		279.25 - 136.07	1.7020	-2635	1.7353	-694	BUY SELL BUY Pending SELL Pending
GBPCHF	56% 44%		231.66 - 178.78	1.2737	-1835	1.3014	-933	BUY SELL BUY Pending SELL Pending
GBPJPY	64% 36%		1698.54 - 385.86	140.2787	-1441	143.5640	-1843	BUY SELL BUY Pending SELL Pending
GBPUSD	65% 35%		4639.81 - 2471.55	1.2859	-1024	1.3211	-2495	BUY SELL BUY Pending SELL Pending
USDCAD	75% 25%		7151.58 - 2382.11	1.3263	-722	1.3374	-387	BUY SELL BUY Pending SELL Pending
USDCHE	95%		10010.56 - 575.73	0.9884	-848	0.9959	-157	BUY SELL BUY Pending SELL Pending
USDJPY	45% 55%		5053.73 - 6115.67	108.9510	-406	110.5172	-1173	BUY SELL BUY Pending SELL Pending

Soft4forex.com - Only profitable Forex robots!

Background color Short color Long color

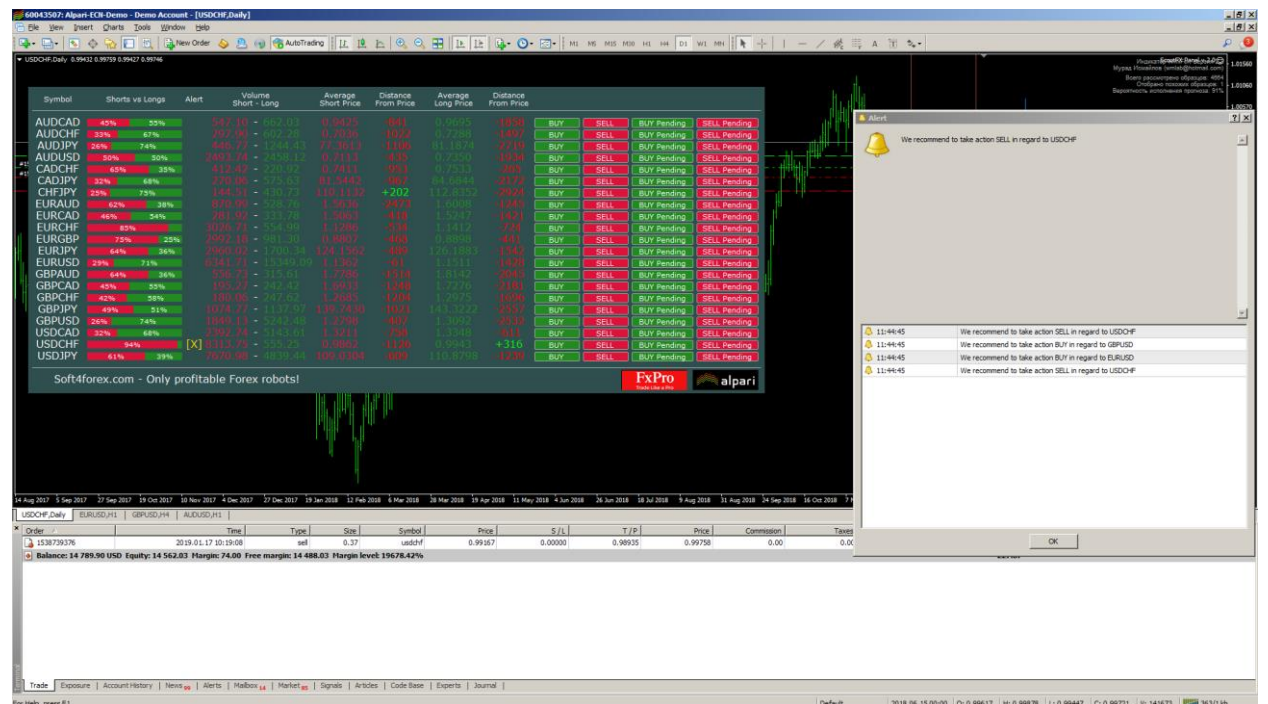
FxPro Trade Like a Pro alpari

use **sound // true** - use a sound notification about the presence of a decision signal. **False** - the sound notification is disabled.

sound target // name of the sound file used for the sound notification.

Market entry recommendations based on ScoutFX signals panel .

The Trader's Panel is a semi-automated trading system that gives the trader recommendations for entering the market.



When an overwhelming majority is reached in one of the directions, according to the parameters set in the settings, the panel signals the trader with a voice message and a text message in a pop-up window. In a pop-up window, the trader will receive a message about the decision to open a buy or sell position for one or more currency pairs. The number of recommended currency pairs depends on market sentiment and the volume of open positions of market participants for each currency pair individually.

You can switch between tools by clicking on the name of the tool in the info panel. ScoutFX Panel clearly shows on the chart the largest accumulation of volumes in the market. The green line is the price

of the accumulation of buy positions. The red line is the price of the largest accumulation of sell positions.

How to enter the market?

Example: The market price is **higher green** line of accumulation of volumes, a signal to sell has been received. Open a deal to **sell**.

Example: The market price is **below** the **red** line of accumulation of volumes, a signal to buy has been received. Open a deal to **buy**.



Trading settings and updates.

The advisor comes with trading settings for the currency pairs EURUSD,GBPUSD,USDJPY,GBPJPY,USDCAD,EURAUD,EURJPY,AUDCAD,AUDJPY,AUDUSD,CADJPY,EURCAD,EURGBP,GBPCHF,USDCHF,CHFJPY,AUDCHF,GBPCAD,NZDCAD,AUDNZD, XAUUSD. Trading settings are written by default in the adviser code, but you can change them at your discretion.

With the release of new updates forex adviser " ScoutFX Panel " or trading settings to it, we will notify you in the newsletter of our site or send updates to your email address registered when purchasing an adviser.

Our contacts.

- Website: full description of strategies <https://soft4forex.ru> and shop <https://forexrobot.pro/ru/>
- e - mail tech. support: support@kalinkacapital.ee
- Phone of those support: +372 74 74 503 (call at the rate of your operator)
- online technical support chat is available on all pages of our site.
- Working hours of technical support on weekdays, from Monday to Friday, from 10-00 to 19-00 GMT +2.

Delivery and payment - [more ...](#)

Warranties - [more...](#)

Risk Warning - [Read](#).

Privacy policy - [read](#).

Our company wishes you a favorable trend and profitable trading!

-----//-----
Name of Expert Advisor/Expert " ScoutFX Panel "©, related trademarks and logos are trademarks owned by Kalinka Capital OU (Estonia).

Attention! This program is protected by copyright law and international conventions. Illegal copying or distribution of this program, or any part of it, may result in severe administrative and criminal penalties and will be prosecuted to the fullest extent of the law.

Copyright © 2008-2023 Kalinka Capital OU All Rights Reserved.

-----//-----